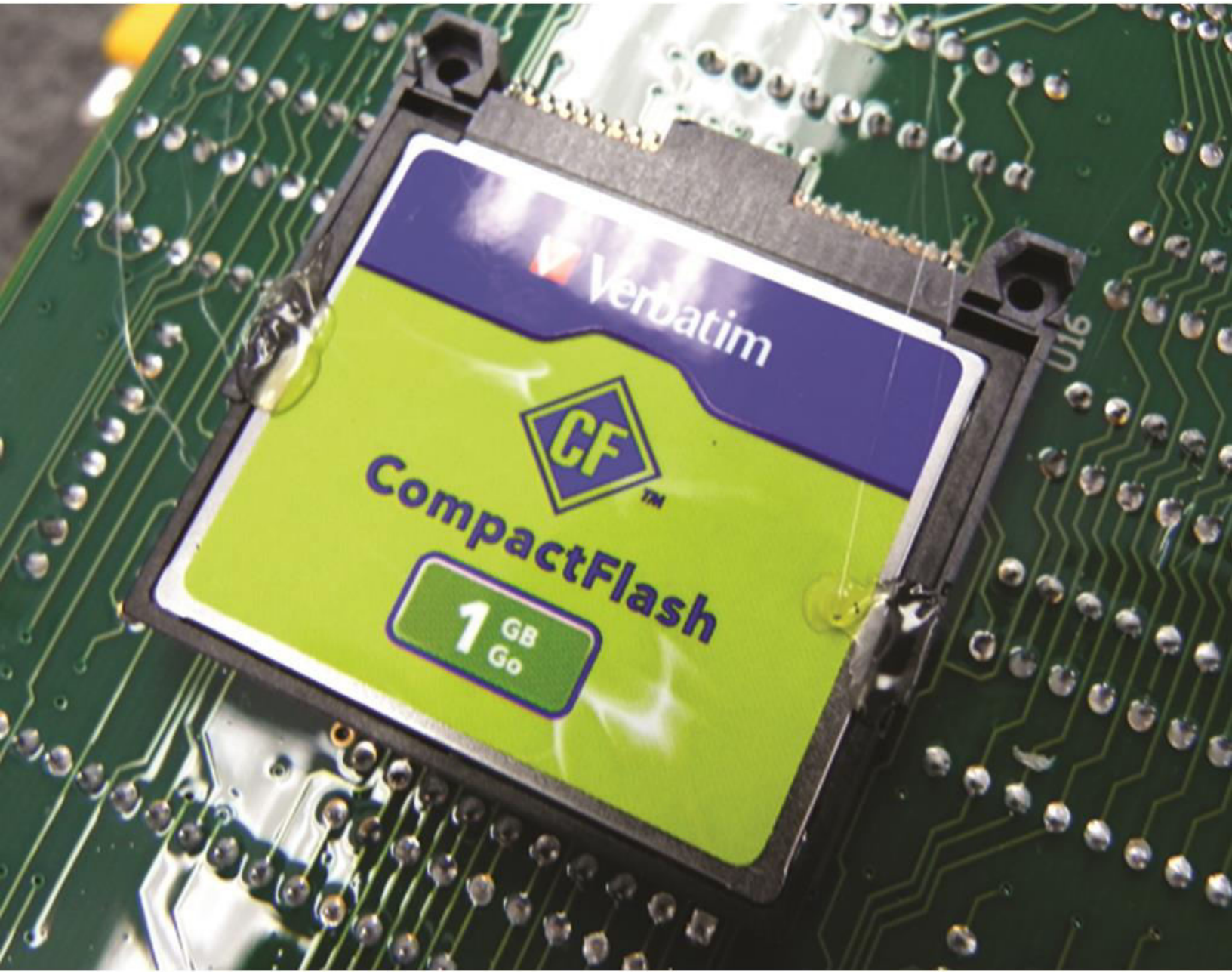




# AURAL-M2

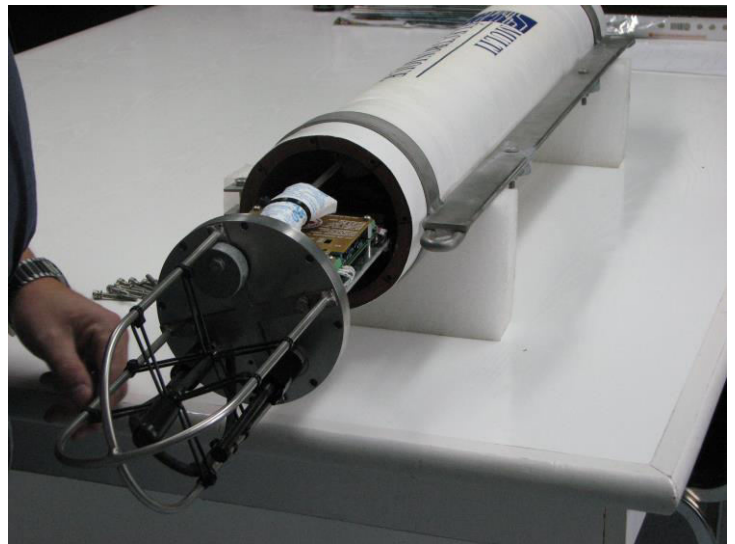
## Compact Flash Installation Procedure



1. Open the cylinder to access the board section

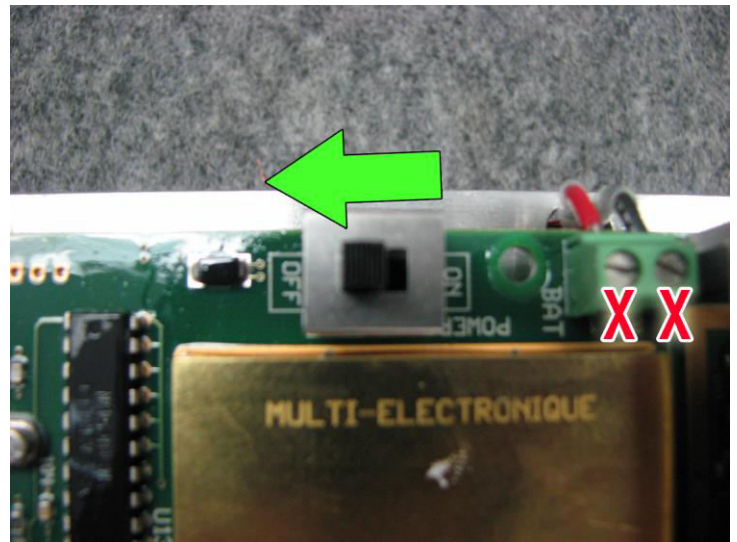
To obtain better pictures, we removed the battery rack.

You do not have to remove the battery rack to do the Compact Flash replacement.



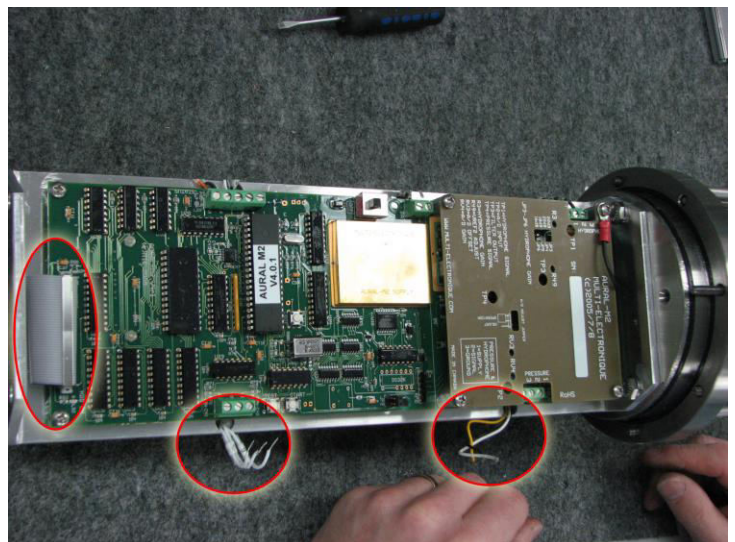
2. Turn OFF the unit and remove or disconnect the batteries

**Be careful that the two terminals do not touch each other.**



3. Disconnect the flat cable and wires on the bottom part of the board (see picture)

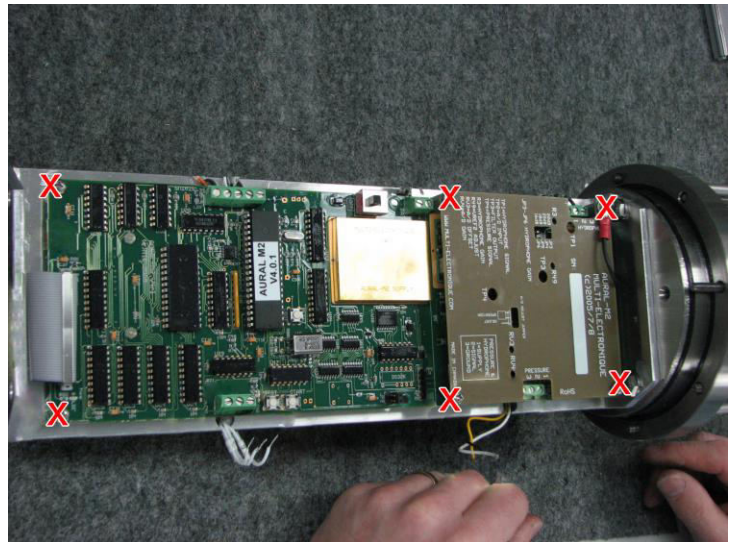
Take note to put them back on later.





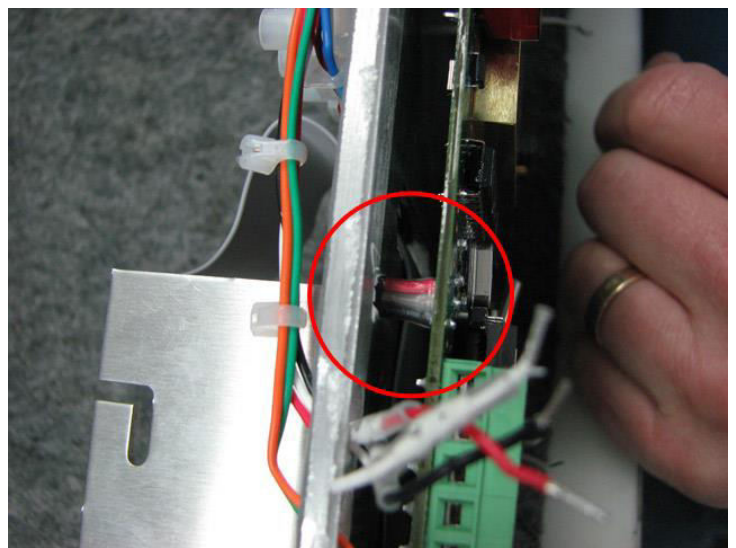
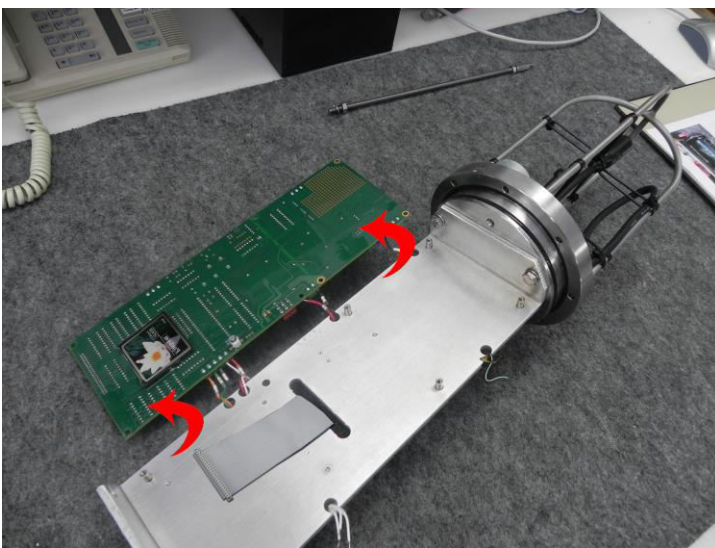
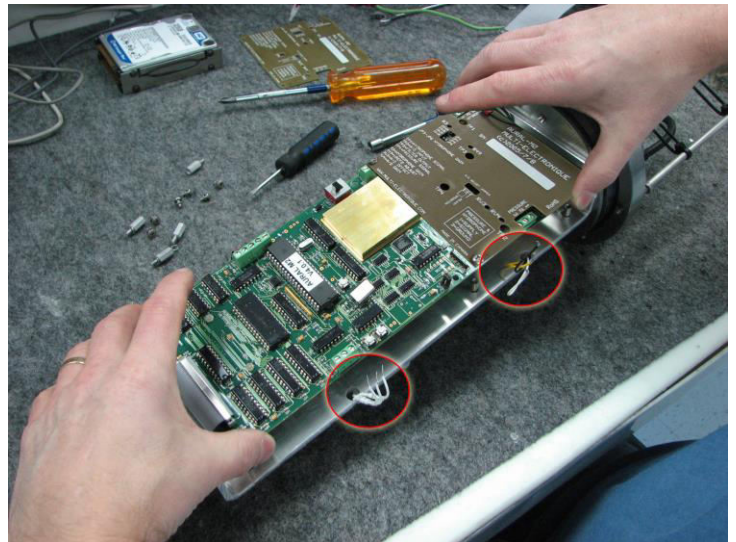
#### 4. Remove screws

Take note to put them back on later.



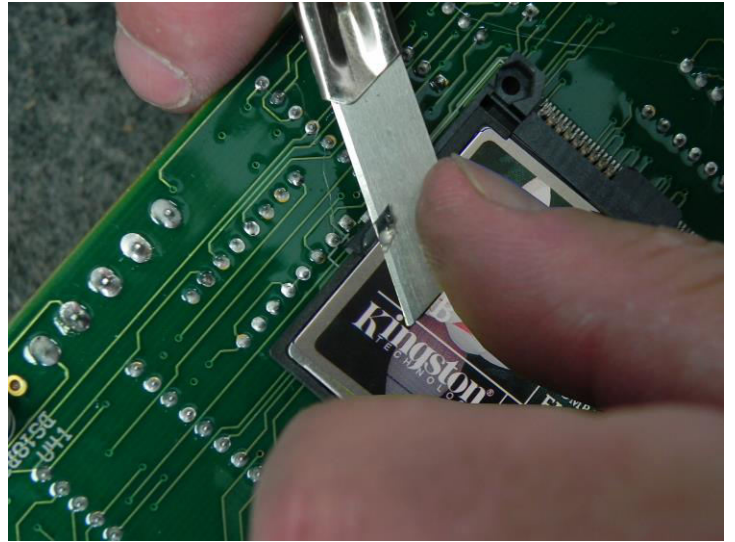
#### 5. Lift and flip the board aside

Be careful not to damage the temperature sensor under the board.

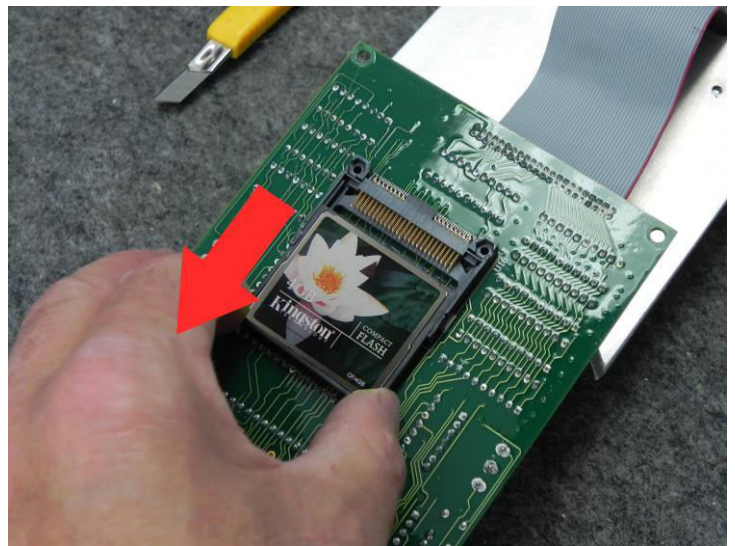


6. Use a X-acto knife to remove the glue drop at each extremity of the Compact Flash

Be careful not to damage the socket.



7. Remove the Compact Flash



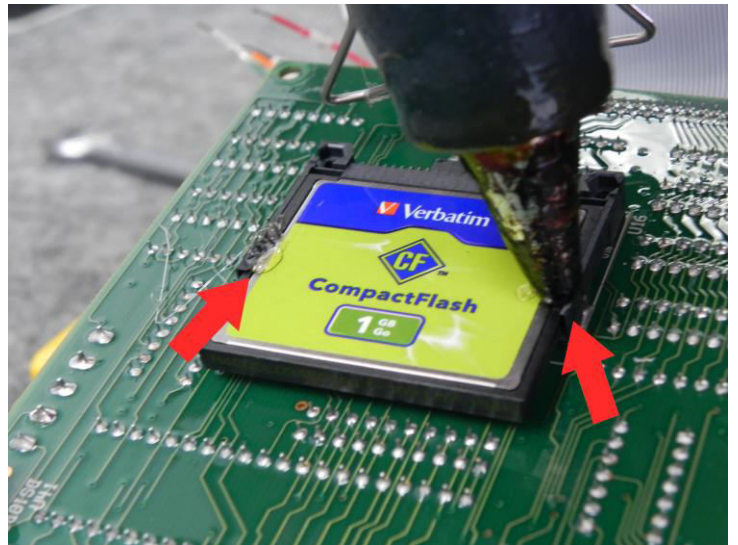
8. Get the replacement Compact Flash and insert it





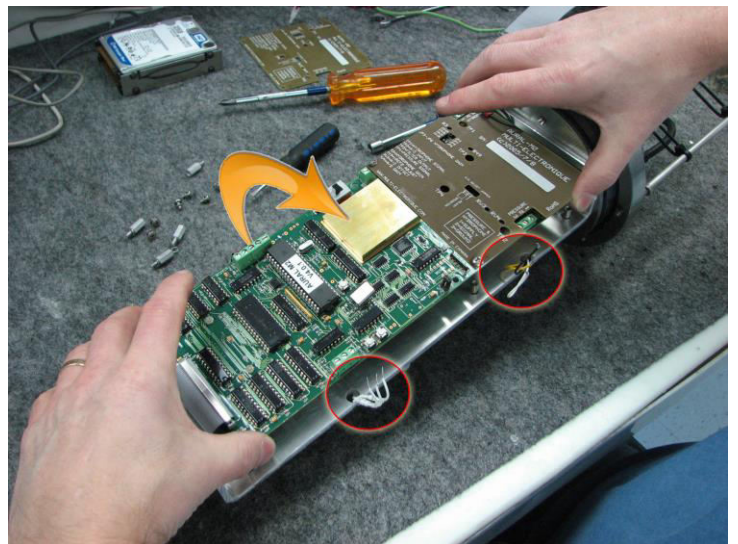
9. Use a glue gun for the following step

Put a small glue drop at both extremity of the Compact Flash and allow it to dry for around 1 minute.

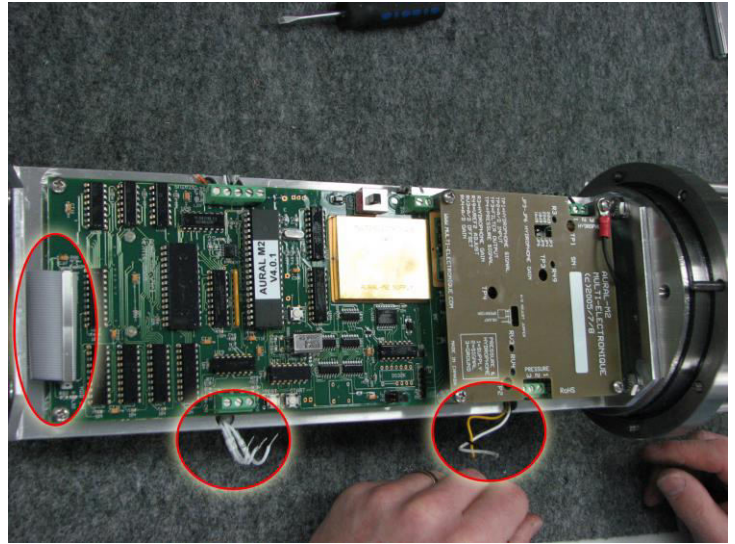


10. Replace the board and screw it back as it was

Be careful not to damage the temperature sensor under the board.



11. Reconnect the wires and the flat cable at their respective place and put back the screws



12. Test the AURAL to make sure it works well.



You have now completed the Compact Flash replacement.