



AURAL-M2

Double Hard Drive Installation Procedure



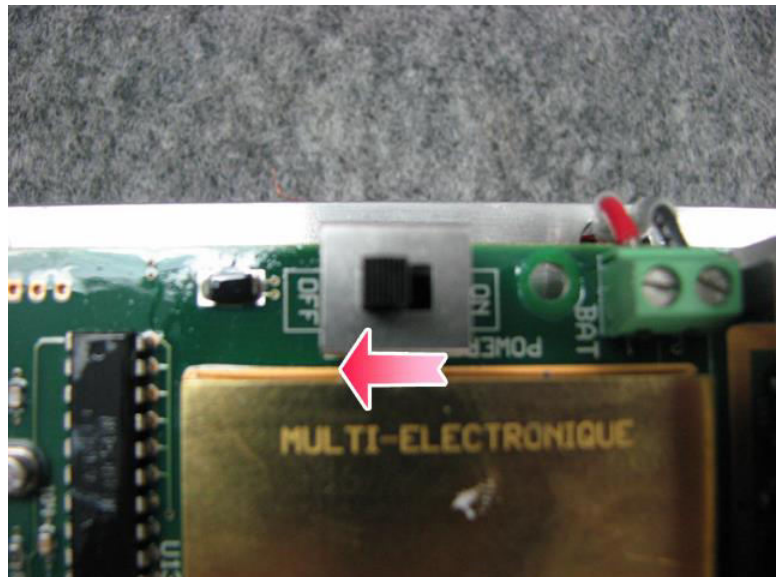
1. Open the cylinder to access the board section

To obtain better pictures, we removed the batteries section.

You do not have to remove the batteries to do the Double Hard Drive replacement.



2. Turn OFF the unit and remove or disconnect the batteries



3. Remove the support o-ring



4. Remove the Hard Drive and unplug the flat cable



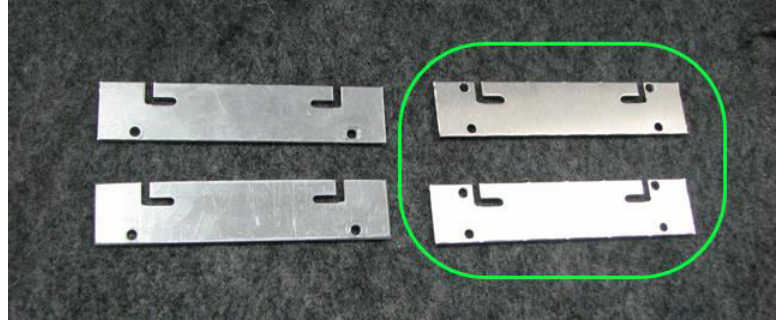
5. Unscrew the Hard Drive



6. Remove the o-ring



7. Get the new Hard Drive support
(Green circle one in the picture)



8. Put a jumper on first pins to set the
second drive as Slave. Do not put a
jumper on the Master.

The recordings start on Master Hard
Drive.

Put a sticker on the Hard Drives to
identify the Master and the Slave.

Master

Slave



9. Put back the o-rings on the new
support and use the lower holes to
screw the Slave Hard Drive

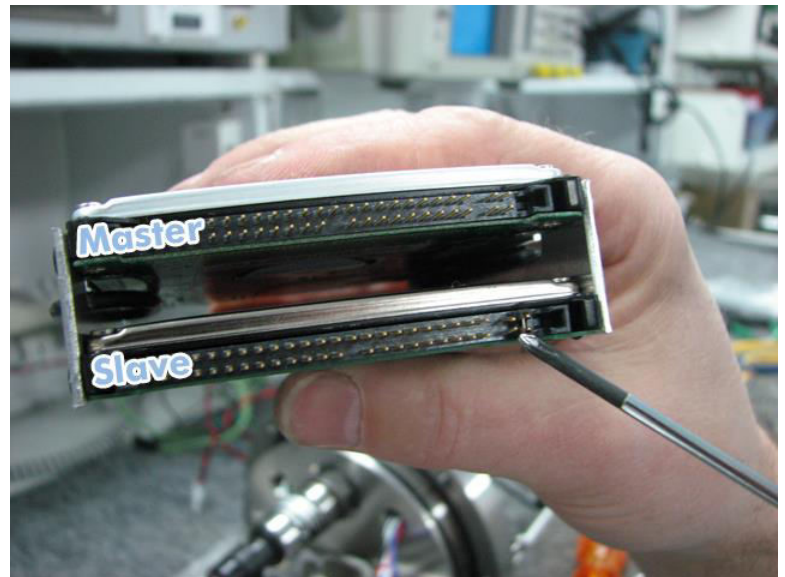


10. Insert the Master Hard Drive

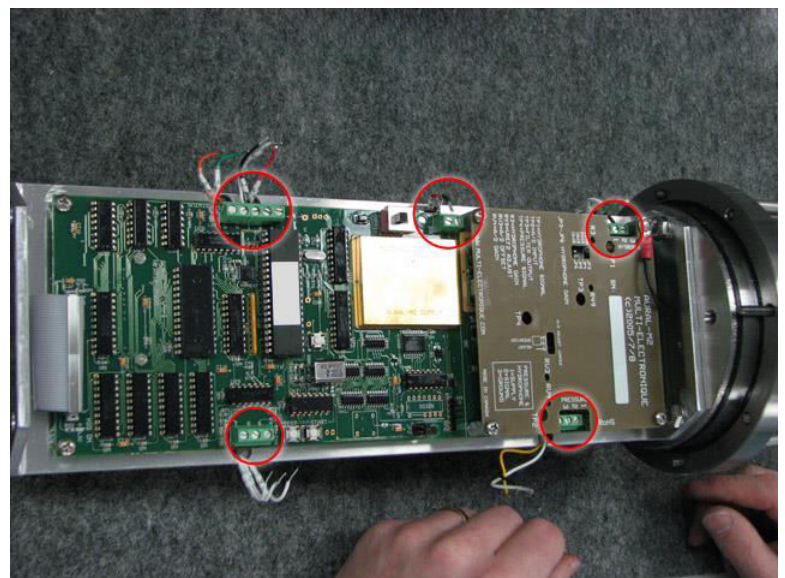
Be sure the o-rings are between both Hard Drive.



11. Use the top screws to fix the Hard Drive



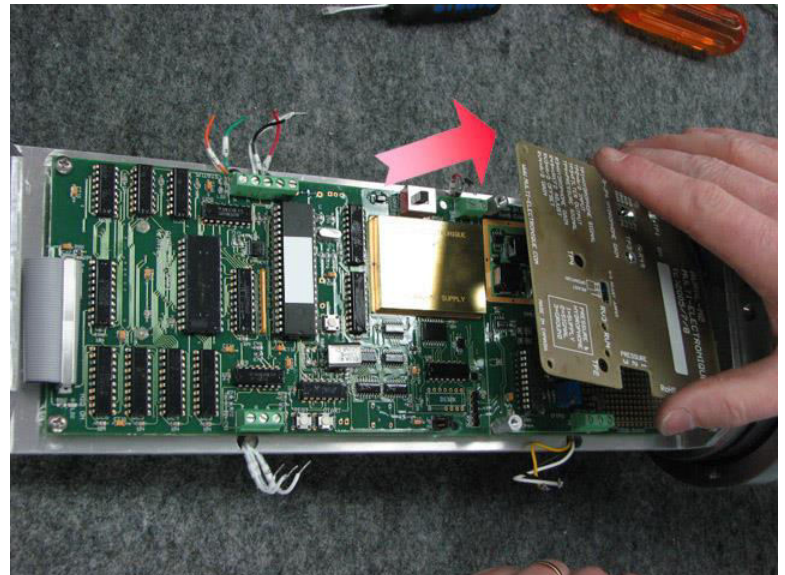
12. Disconnect all wires. Take note to put them back on later.



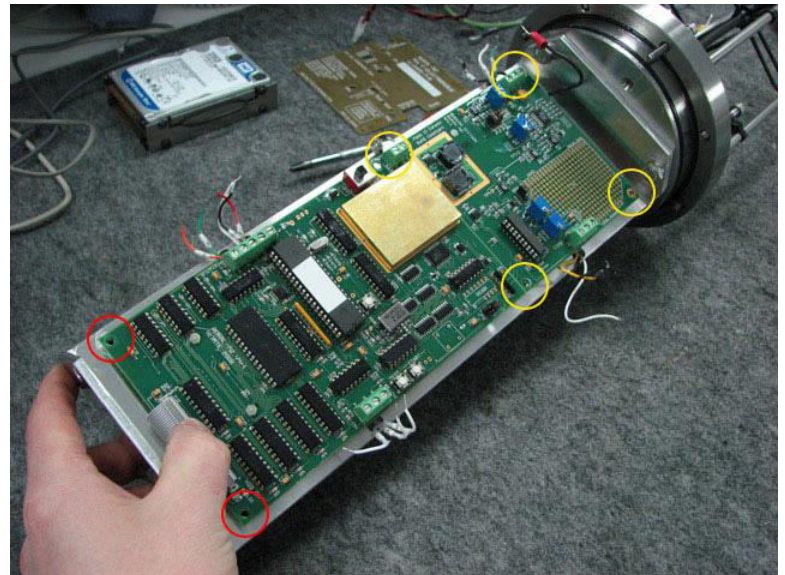
13. Use Phillips screwdriver to remove the shield



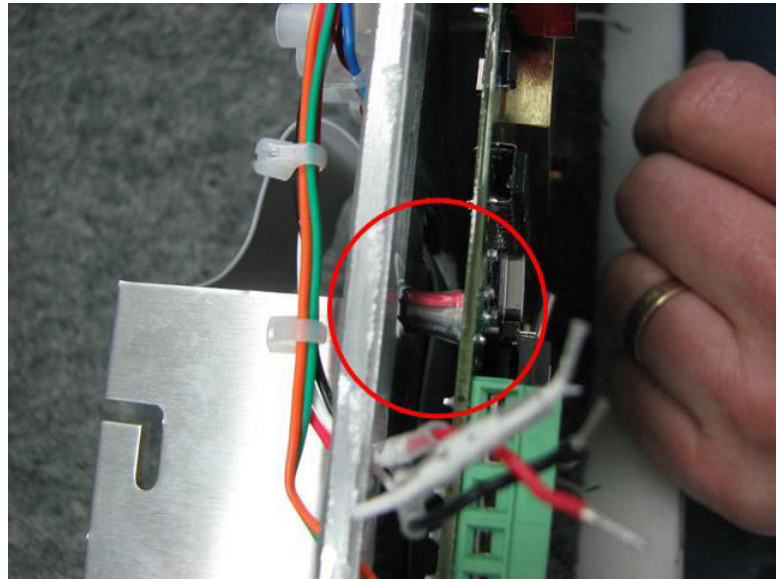
14. Remove the shield



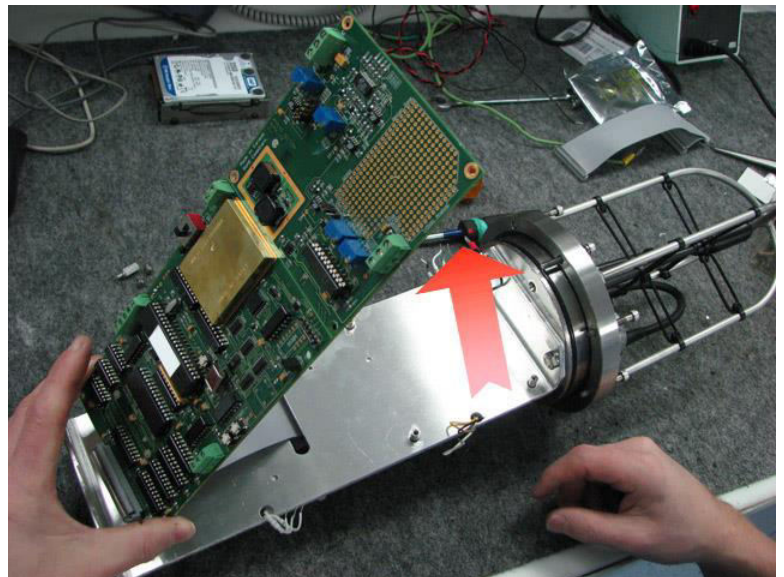
15. Use a Phillips screwdriver or a 1/4 box tool to remove the PCB



16. Be careful not to damage the temperature sensor under the board



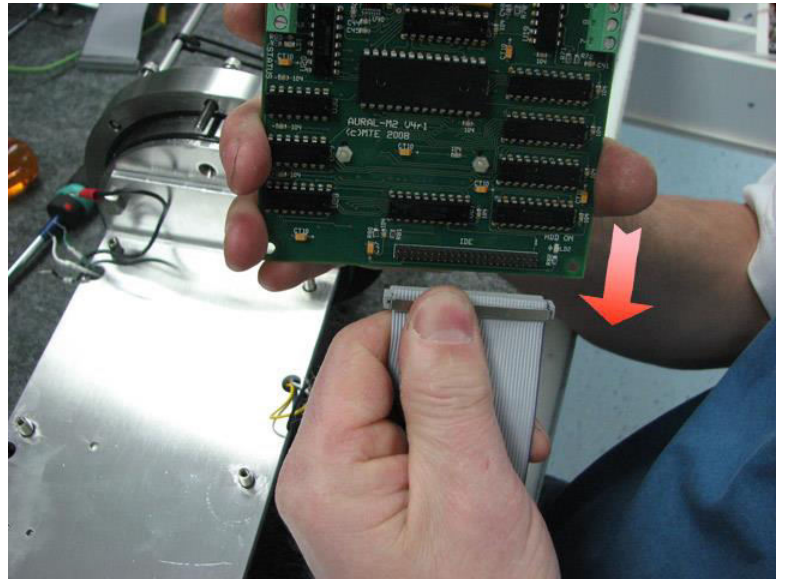
17. Remove the board



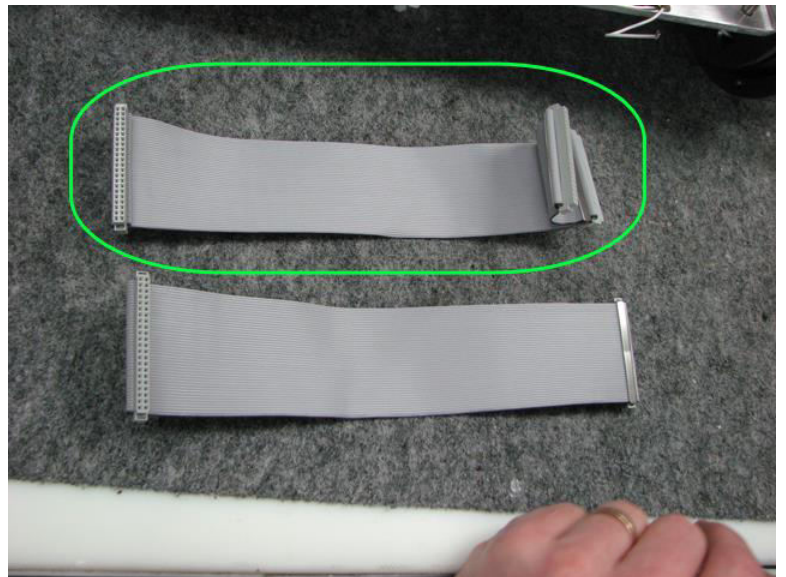
18. Retract the original flat cable



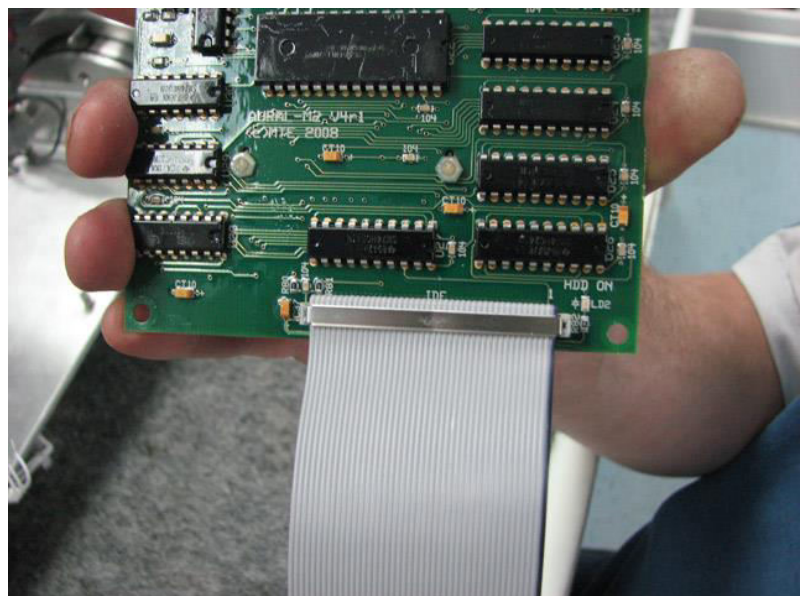
19. Disconnect the flat cable on the other side of the board



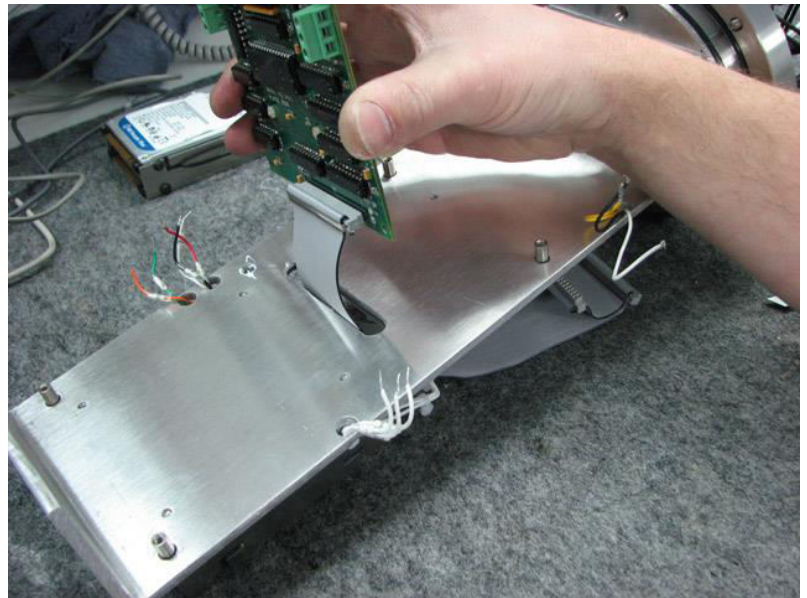
20. Get the new two-head flat cable



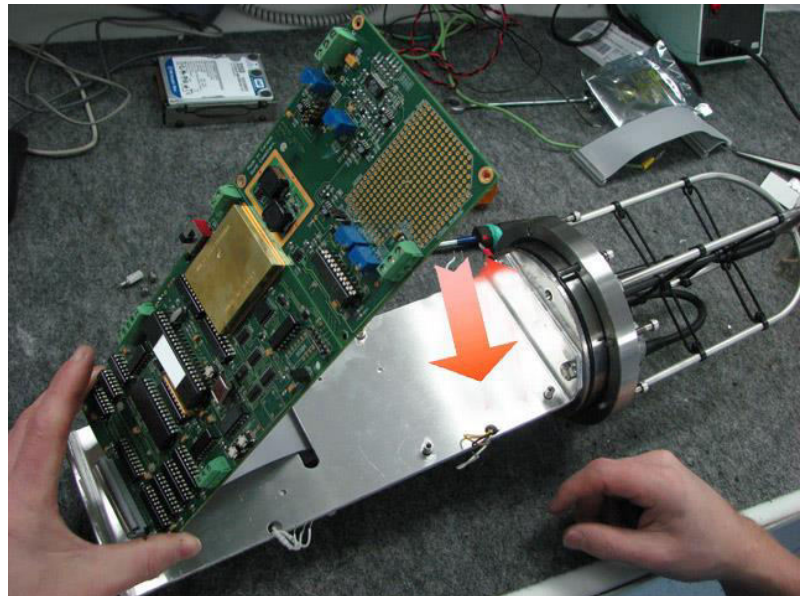
21. Plug the new flat cable using the single connector end



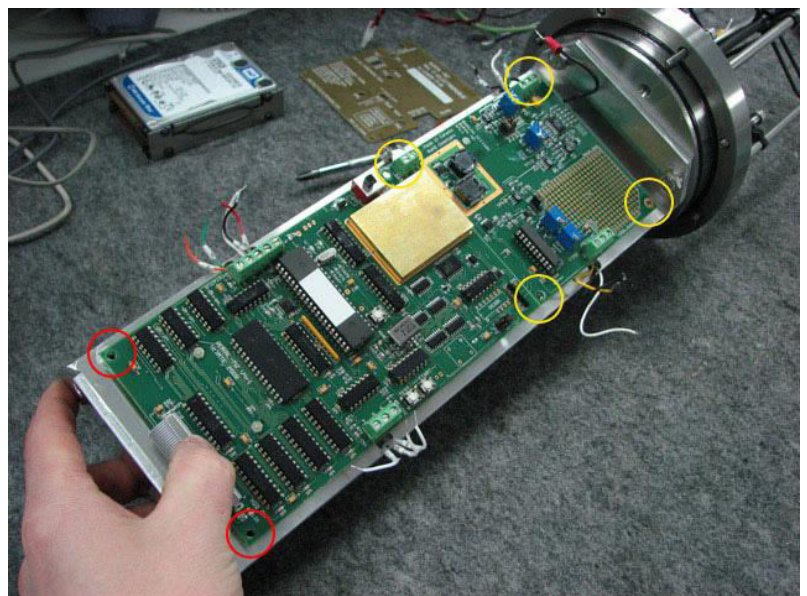
22. Refer to the picture to insert the new flat cable



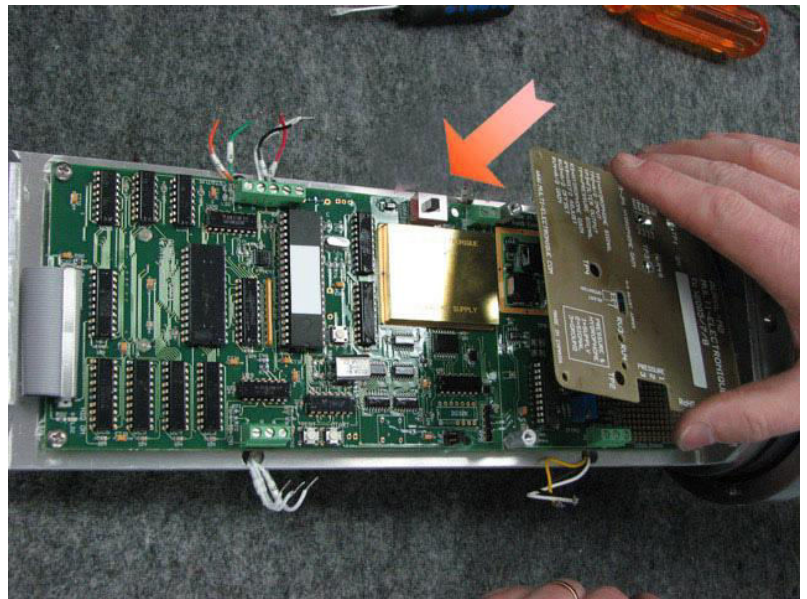
23. Reinstall the board



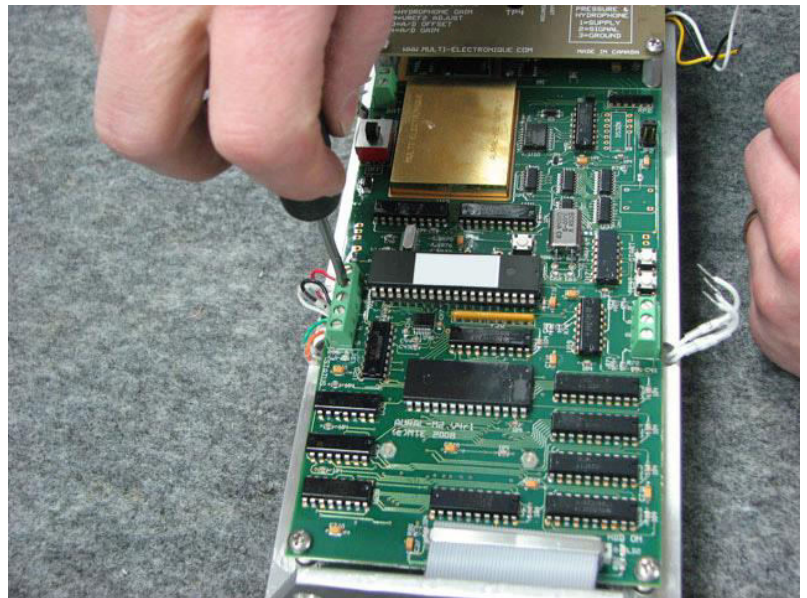
24. Screw it back as it was



25. Reinstall the shield



26. Reconnect all wires



27. Connect the flat cable to both Hard Drives



28. Use the o-ring to reinstall the Hard Drives in place



29. Use a flat screwdriver to kindly push out the old MCU by each extremity little by little

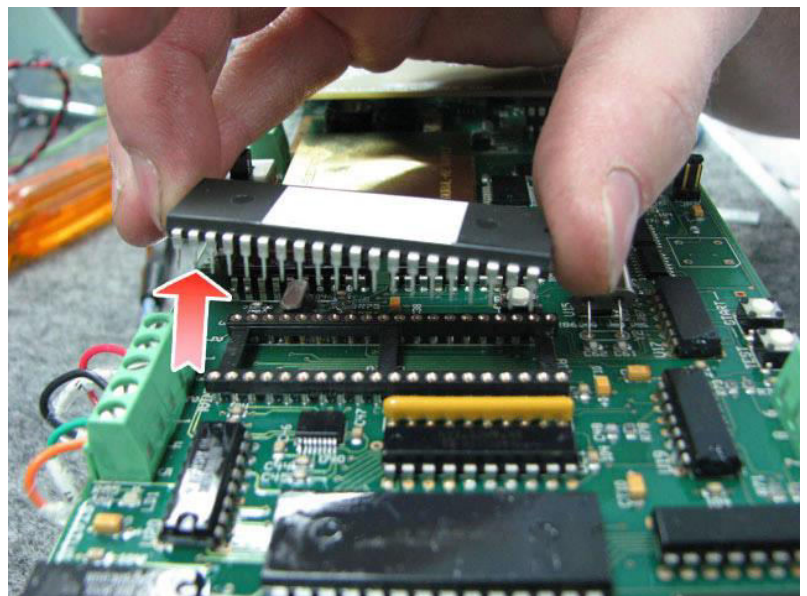
Note: Discharge your hand from any static charge before replacing the MCU. AURAL components are sensible to static charge.

Be very careful to insert the screwdriver between the MCU and the socket, not under the socket.

Do not push the screwdriver too far in, you may damage the PCB while prying the MCU.

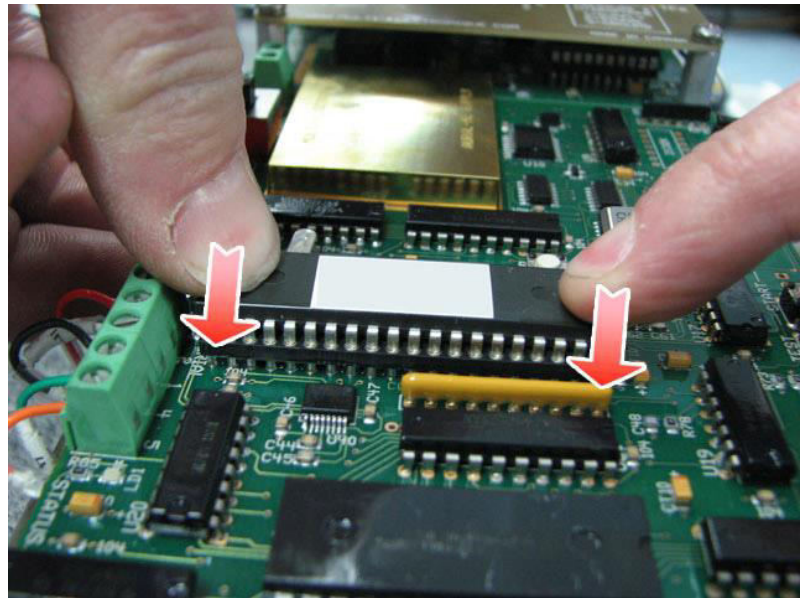


30. Remove the old MCU



31. Insert the new MCU in place. Be sure each pin is fit in each hole

The dual Hard Drive option requires V3.4.0 and up



32. Reconnect and/or reinstall the batteries



You have now completed the hardware installation of your new Double Drive kit.

It is recommended to always work with the most up-to-date update of AURAL setup and InfoWave.

The software is available to download in the User section in our website.

www.multi-electronique.com